

RESOLUTION NO. 2024-02-11002

CITY OF TONTITOWN, WASHINGTON COUNTY, ARKANSAS

A RESOLUTION AUTHORIZING THE MAYOR TO NEGOTIATE AND EXECUTE A CONTRACT WITH BLACK HILLS ENERGY FOR THE RELOCATION OF A GAS MAIN ALONG THE WEST SIDE OF MANTEGANI ROAD FOR THE PROPOSED STREET IMPROVEMENTS PROJECT IN THE CITY OF TONTITOWN, ARKANSAS.

WHEREAS, the City of Tontitown has completed the design of a half street improvement project along Mantegani Road, and has found that a gas main is in conflict with the proposed street improvements from HWY 412 to Sbanotto Avenue, as depicted in the attached Exhibit "A"; and

WHEREAS, the City has received an estimate from Black Hills Energy for the cost associated with the relocation of the gas main in the amount of approximately \$62,010.00; and

WHEREAS, the City Council has determined that it is in the best interest and benefit of the community to authorize the Mayor to negotiate and execute a contract with Black Hills Energy to relocate the gas main in conflict with the necessary street improvements project in the City of Tontitown.

NOW, THEREFORE, BE IT RESOLVED, by the City Council of the City of Tontitown, Arkansas:

Section 1. The Mayor is hereby authorized to negotiate and execute a contract with Black Hills Energy for the relocation of a gas main along the West side of Mantegani Road, in order to complete the necessary street improvements project from HWY 412 to Sbanotto Avenue, as depicted in the attached Exhibit "A".

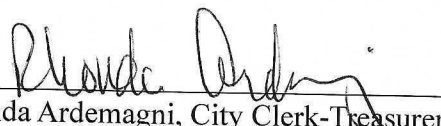
Section 2. The Mayor and her designee are hereby authorized to take all such action as necessary in connection therewith.

PASSED AND APPROVED this 20 day of February 2024.

APPROVED:


Angela Russell, Mayor

ATTEST:


Rhonda Ardemagni, City Clerk-Treasurer
(SEAL)



Doc ID: 021470830014 Type: REL
Kind: RESOLUTION
Recorded: 02/27/2024 at 02:15:16 PM
Fee Amt: \$80.00 Page 1 of 14
Washington County, AR
Kyle Sylvester Circuit Clerk
File 2024-00004529

CITY OF TONTON, WASHINGTON COUNTY, ARKANSAS

A RESOLUTION AUTHORIZING THE MAYOR TO NEGOTIATE AND EXECUTE A CONTRACT WITH BLACK HILLS ENERGY FOR THE RELOCATION OF A GAS MAIN ALONG THE WEST SIDE OF MANTEGANI ROAD FOR THE PROPOSED STREET IMPROVEMENTS PROJECT IN THE CITY OF TONTON, ARKANSAS.

WHEREAS, the City of Tontion has completed the design of a half-mile improvement project along Mantegani Road, and has found that a gas main in conflict with the proposed street improvements from HWY 412 to Stanton Avenue, as depicted in the attached Exhibit "A", and

WHEREAS, the City has received an estimate from Black Hills Energy for the cost associated with the relocation of the gas main in the amount of approximately \$25,000.00; and

WHEREAS, the City Council has determined that it is in the best interest and benefit of the community to authorize the Mayor to negotiate and execute a contract with Black Hills Energy to relocate the gas main in conflict with the necessary street improvements project in the City of Tontion;

NOW, THEREFORE, BE IT RESOLVED, by the City Council of the City of Tontion,

Arkansas:

Section 1. The Mayor is hereby authorized to negotiate and execute a contract with Black Hills Energy for the relocation of a gas main along the west side of Mantegani Road, in order to complete the necessary street improvements project from HWY 412 to Stanton Avenue, as depicted in the attached Exhibit "A".

Section 2. The Mayor and her designees are hereby authorized to take all such action as necessary in connection therewith.

PASSED AND APPROVED this 10th day of February, 2024.

APPROVED:

Angela Russell
Angela Russell, Mayor

ATTEST:

Rhonda Anderson
Rhonda Anderson, City Clerk-Treasurer
(SEAL)

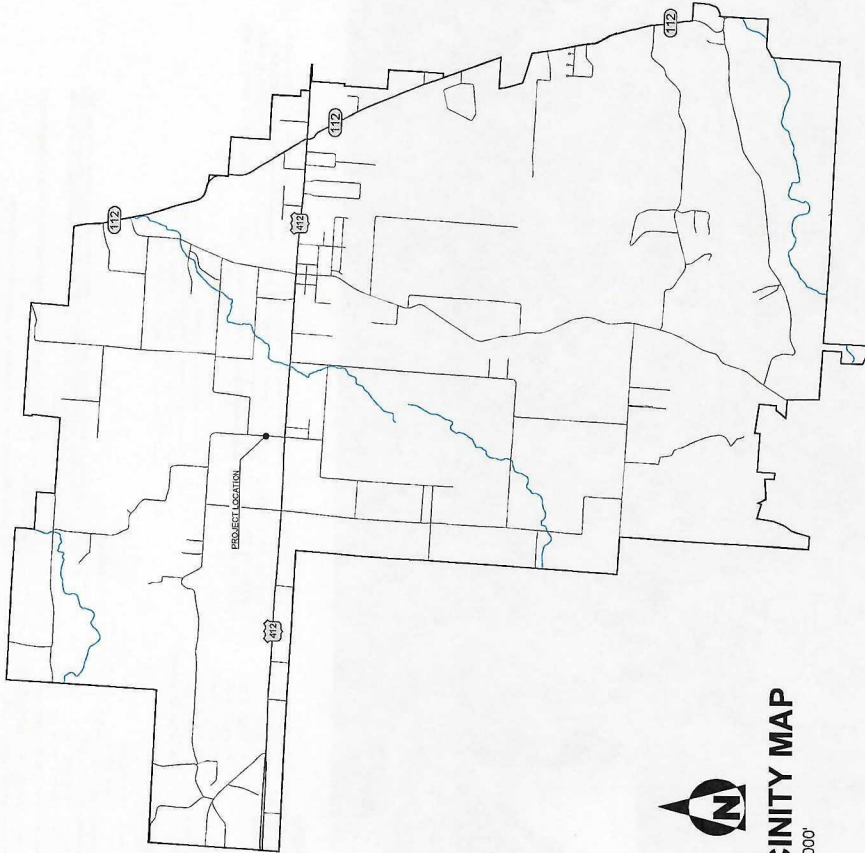


MANTEGANI ROAD HALF STREET IMPROVEMENTS

HENRI DE TONTI BLVD TO BARIOLA STREET
PROJECT NO.: T-2023001

DECEMBER 2023

EXHIBIT
A



VICINITY MAP
1" = 2,000'

NOTES:

- 1) ELEVATION DATUM IS NAVD 88
- 2) GRADE LINE DENOTES FINISHED GRADE WHERE SHOWN ON PLANS
- 3) ALL PIPE LINES, POWER, TELEPHONE AND TELEGRAPH LINES TO BE MOVED OR LOWERED BY OWNER
- 4) ANY EQUIPMENT OR APPURTENANCE THAT INTERFERES WITH THE PROPOSED CONSTRUCTION ACTIVITIES MAY BE MOVED BY THE OWNER UNLESS NOT OTHERWISE PROVIDED
- 5) THE CONTRACTOR SHALL BE RESPONSIBLE FOR MAINTAINING U.S. MAILBOXES WITHIN THE PROJECT LIMITS IN SUCH A MANNER THAT THE PUBLIC MAY RECEIVE CONTINUED MAIL SERVICE.
- 6) ALL LAND MONUMENTS LOCATED WITHIN THE CONSTRUCTION AREA SHALL BE PROTECTED.
- 7) ALL TREES THAT DO NOT DIRECTLY INTERFERE WITH THE PROPOSED CONSTRUCTION SHALL BE SPARED AS DIRECTED BY THE ENGINEER. CARE AND DISCRETION SHALL BE USED TO ENSURE THAT TREES NOT TO BE REMOVED SHALL BE THIMBED AS UTILE AS POSSIBLE DURING CONSTRUCTION OPERATIONS
- 8) THE CONTRACTOR SHALL BE RESPONSIBLE FOR PROVIDING A FENCE TO CONTROL INTERFERING AREAS WHERE PASTURES ARE ENCLOSED. WIRE FENCE MAY BE CONSTRUCTED INITIALLY TO CRAN LIFT. THEREAFTER, THE CONTRACTOR AT HIS OWN EXPENSE, MAY ELECT TO PROVIDE TEMPORARY FENCING SUITABLE TO CONTAIN LUMBER STOCK.
- 9) LOCATION AND/OR ELEVATIONS OF EXISTING UTILITIES AS SHOWN ON THESE PLANS ARE APPROXIMATE. THE INFORMATION IS NOT TO BE RELIED ON AS BEING EXACT OR COMPLETE. AT LEAST 48 HOURS BEFORE THE COMMENCEMENT OF CONSTRUCTION, THE CONTRACTOR SHALL BE RESPONSIBLE FOR VERIFYING THE LOCATION AND DEPTHS OF UNDERGROUND UTILITIES. ALL UTILITY DISCONNECTIONS AND/OR DISRUPTIONS SHALL BE COORDINATED WITH THE DESIGNATED UTILITY COMPANIES, AS WELL AS THE AFFECTED RESIDENTS AND PROPERTY OWNERS.
- 10) THE CONTRACTOR IS TO REMOVE AND DISPOSE OF ALL LIMBS, BRUSH, AND OTHER MATERIALS RESULTING FROM PREVIOUS AND CURRENT DEMOLITION OPERATIONS. DISPOSAL SHALL BE IN ACCORDANCE WITH ALL LOCAL, STATE AND/OR FEDERAL REGULATIONS GOVERNING SUCH OPERATIONS.
- 11) CONTRACTOR SHALL BE HELD FULLY RESPONSIBLE FOR MAINTAINING ALL PRECAUTIONS NECESSARY TO AVOID PROPERTY DAMAGE TO ADJACENT PROPERTIES DURING THE CONSTRUCTION PERIODS AT THE SITE.
- 12) BESTING GROUND SURFACE PROFILE IS SHOWN FOR INFORMATION PURPOSES ON AND IS AN APPROXIMATION OF FIELD TOPOGRAPHY.
- 13) THE CONTRACTOR SHALL CONTROL EROSION ON THE SITE. ALL DISTURBED AREAS SHALL BE RESEED, FERTILIZED, MULCHED, AND WATERED AS DIRECTED BY THE SPECIFICATIONS AS SOON AS POSSIBLE AFTER COMPLETION OF CONSTRUCTION. EROSION CONTROL MEASURES SHALL BE MAINTAINED AS LONG AS NEEDED UNTIL THE PROJECT IS COMPLETE AND ACCEPTED. THE SITE SHALL BE GRADDED TO MAINTAIN POSITIVE DRAINAGE DURING CONSTRUCTION. WATER SHALL NOT BE ALLOWED TO POND.

CONTACTS

PUBLIC WORKS
JAMES CLARK
479.341.2700
Publicworks@towntown.gov

PLANNING
CITY MANAGER
CITY PLANNER
Planning@towntown.gov

ENGINEERING
ZAK JOHNSTON
479.454.4270
Engineer@towntown.gov



**SAFETY IS IN YOUR HANDS.
EVERY DIG. EVERY TIME.**

MANTEGANI ROAD HALF STREET IMPROVEMENTS
TONTTOWN, AR

REVISION

ISSUED BY: Z

DATE: 2023/11/13

PROJECT NO: T-2023001

SHEET

C-000

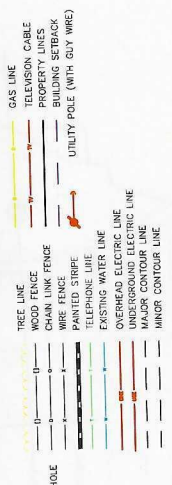


235 E HENRI DE TONTI BLVD
TONTTOWN, AR 72081
479.341.2700

REVISION	
DATE	2023/11/13
DRAWN BY	Z
PROJECT NO.	1-2023001
SHEET	C-001



- UTILITY NOTES:**
- EXISTING UTILITIES SHOWN ARE FOR INFORMATION PURPOSES ONLY AND BASED ON INFORMATION OBTAINED THROUGH VARIOUS MEANS AND ELEVATION. CONTRACTOR SHALL NOTIFY THE ENGINEER OF ANY DISCREPANCIES AND/OR CONFLICTS BEFORE CONSTRUCTION OF ANY UTILITIES. CONTRACTOR SHALL BE RESPONSIBLE TO PROVIDE PROTECTION AS NOTED TO AVOID DAMAGE TO EXISTING UTILITIES.
 - ALL COORDINATES AND DIMENSIONS ARE TO THE CENTERLINE OF UTILITIES AND STRUCTURES UNLESS OTHERWISE NOTED.
 - CONTRACTOR SHALL COORDINATE INSPECTION AND TESTING WITH THE ENGINEER PRIOR TO BACKFILLING ANY IMPROVEMENTS.
 - THE CONTRACTOR SHALL CONDUCT AN AIR PRESSURE TEST ON ALL GRAVITY SEWER LINES AND HYDRAULIC TEST ON ALL WATER LINES TO THE SATISFACTION OF THE OWNER AND THE ENGINEER. AGENT TO SPECIFICATIONS FOR SEWER LINE AND WATER LINE TESTING.
 - THE CONTRACTOR SHALL CONDUCT VACUUM TEST ON SANITARY SEWER MANHOLES PRIOR TO BACK FILLING.
 - CONTRACTOR SHALL COORDINATE INSTALLATION OF UTILITIES IN SUCH A MANNER AS TO AVOID CONFLICTS AND TO ASSURE SPECIFIED DEPTHS AND SPACING ARE MAINTAINED.
 - CONTRACTOR IS RESPONSIBLE FOR ADJUSTING MANHOLES TO FINAL GRADE AS REQUIRED BY THE SPECIFICATIONS. DAMAGE TO SURFACES BEYOND THE LIMITS OF THE IMPROVEMENTS WILL BE REPAIRED BY THE CONTRACTOR AT HIS EXPENSE. REPAIRS SHALL BE APPROVED BY THE AGENCY HAVING JURISDICTION.
 - DO NOT EXCEED MANUFACTURER'S RECOMMENDED MAXIMUM DEFLECTION FOR PIPE JOINTS.
 - AT LOCATIONS WHERE NEW PIPES, FITTINGS, AND/OR STRUCTURES ARE ADJACENT TO EXISTING PIPES, FITTINGS, AND/OR STRUCTURES, EXISTING THREAT-BLOOMING SHALL BE PROVIDED FOR REMOVAL FOR THE CONVENIENCE OF THE CONTRACTOR. THE CONTRACTOR SHALL BE RESPONSIBLE FOR THE PROTECTION OF THE WORK SHALL BE REPLACED AT NO COST TO THE OWNER OR ENGINEER.
 - THE CONTRACTOR SHALL PROVIDE SHOP DRAWINGS TO THE OWNER AND ENGINEER OF ALL FITTINGS, BENDS, JOINTS, AND SPECIAL PIPING USE TO CONSTRUCT AN UNDERGROUND UTILITY.
 - ALL FRANCHISE UTILITIES ARE RESPONSIBLE FOR RELOCATING THEIR RESPECTIVE UTILITY FACILITIES.
 - BRACING ELECTRICAL POLES FOR EXCAVATIONS SHALL BE PROVIDED. CONTRACTOR SHALL CONTACT COAK, ELECTRIC COOPERATIVE TO INSTALL NEW WATER LINE AND BOX C/W VERT LOCATED IN CLOSE PROXIMITY OF THEIR POLES.



- NOTES:**
- THE CONTRACTOR SHALL COVER, EROSION CONTROL, ALL DISTURBED AREAS SHALL BE SEED, FERTILIZED AND SOIL ENRICHED AS REQUIRED BY THE SPECIFICATIONS AS SOON AS POSSIBLE AFTER CONSTRUCTION ACTIVITY IS COMPLETED. THE SITE SHALL BE GRADED TO MAINTAIN POSITIVE DRAINAGE DURING CONSTRUCTION. WATER SHALL NOT BE ALLOWED TO POOL.
 - THE CONTRACTOR SHALL CALL "KANSAS ONE-CALL" FOR LOCATION OF ALL UTILITIES PRIOR TO COMMENCEMENT OF ANY EXCAVATION.
 - THE CONTRACTOR SHALL COMPLY WITH ALL APPLICABLE LAWS, CODES AND ORDINANCES.
 - THE CONTRACTOR SHALL COORDINATE WITH EACH UTILITY COMPANY PRIOR TO ANY EXCAVATION. ANY DAMAGE TO UTILITY LINES CAUSED BY THE CONTRACTOR SHALL BE REPAIRED AT THE CONTRACTOR'S EXPENSE.
 - CONTRACTOR SHALL PROTECT ALL PROPERTY PINS AND CONSTRUCTION STAKES. CONTRACTOR SHALL PAY ANY COST FOR RE-ESTABLISHING PROPERTY PINS OR CONSTRUCTION STAKES.
 - CONTRACTOR SHALL COMPLY WITH ALL RULES AND REGULATIONS TO MAINTAIN AVAILABLE TRECHER SAFETY SYSTEM AT ALL TIMES (IN ACCORDANCE WITH OSHA 29 CFR PART 190).
 - STREET REPAIR AND/OR REPLACEMENT WILL BE PAID IN ACCORDANCE WITH PAYMENT SCHEDULE OUTLINE.
 - ACCESS TO EXISTING PRIVATE DRIVES AND POSTAL DELIVERY SHALL BE MAINTAINED BY CONTRACTOR AT ALL TIMES.
 - WORK ON EXISTING ROADWAYS SHALL INCLUDE WORKING WITH THE KANSAS DEPARTMENT OF TRANSPORTATION AND OTHER AGENCIES. TRAFFIC CONTROL SHALL BE PROVIDED AS REQUIRED TO ADEQUATELY PROTECT THE ROADWAY. A UTILITY IS BEING LOCATED IN THE ROADWAY THAT IS BEING CONSIDERED FOR SURFACE PROFILE IS SHOWN FOR INFORMATION PURPOSES ONLY AND IS AN APPROXIMATION OF FIELD TOPOGRAPHY.

EXISTING LEGEND

- MONUMENT FOUND (AS NOTED)
- MONUMENT SET (AS NOTED)
- HTD R-W MONUMENT
- BENCHMARK
- BOUNDARY POINT
- TELEPHONE RISER
- FIBER OPTIC TELEPHONE RISER
- ELECTRICAL RISER

PROPOSED LEGEND

- STORM SEWER
- CURB AND CUTTER
- PAINTED STRIPE
- EXISTING WATER LINE
- OVERHEAD ELECTRIC LINE
- UNDERGROUND ELECTRIC LINE
- MAJOR CONTOUR LINE
- MINOR CONTOUR LINE

INDEX

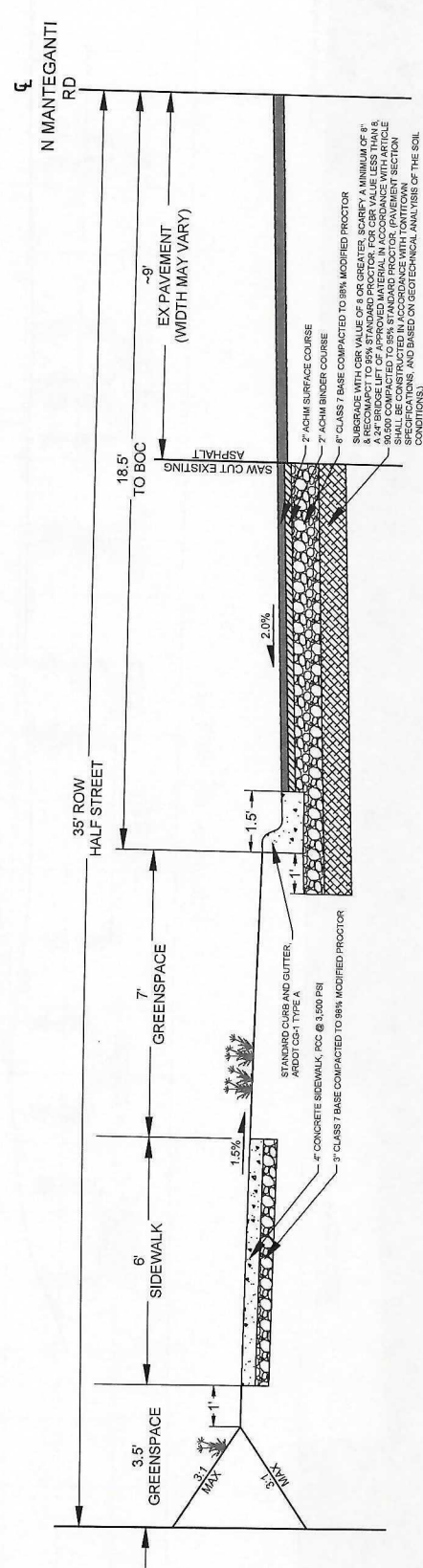
- C-000 COVER SHEET
- C-001 OVERVIEW SHEET
- C-002 CROSS SECTION DETAIL
- C-101 STREET P&P STA 0+00.00 - 5+00.00
- C-102 STREET P&P STA 5+00.00 - 10+00.00
- C-201 STREET P&P STA 10+00.00 - 13+50.00
- C-202 CROSS SECTIONS 0+00.00 - 9+50.00
- CROSS SECTIONS 10+00.00 - 13+00.00
- STANDARD DETAILS
- CG-1
- FES-2
- FPC-8E
- PCC-1

NOTES:

- 1) THE CONTRACTOR SHALL CONTROL EROSION ON THE SITE. ALL DISTURBED AREAS SHALL BE SEEDED, FERTILIZED AND MULCHED (OR ESCARPED) AS DETERMINED BY THE CITY AS SOON AS POSSIBLE AFTER CONSTRUCTION ACTIVITY IS COMPLETED. MULCH SHALL BE APPLIED TO PREVENT POSITIVE DRAINAGE DURING CONSTRUCTION.
- 2) WATER SHALL NOT BE ALLOWED TO POND.
- 3) COMMENCEMENT OF ANY EXCAVATION, REMEDIATION OR INSTALLATION OF UTILITIES SHALL BE PRIOR TO THE COMPLETION OF ANY EXCAVATION, REMEDIATION OR INSTALLATION OF UTILITIES.
- 4) THE CONTRACTOR SHALL COMPLY WITH ALL APPLICABLE LAWS, CODES AND ORDINANCES.
- 5) TO UTILITY LINES CAUSED BY THE CONTRACTOR SHALL BE REPAIRED AT THE CONTRACTOR'S EXPENSE.
- 6) COST FOR REPAIRING PROPERTY PRIOR TO CONSTRUCTION STAKES, CONTRACTOR SHALL PAY ANY COST FOR REPAIRING PROPERTY PRIOR TO CONSTRUCTION STAKES.
- 7) CONTRACTOR SHALL COMPLY WITH ALL RULES AND REGULATIONS TO MAINTAIN AVAILABLE TRUCK SAFETY CLEARANCE AT ALL TIMES.
- 8) CONTRACTOR SHALL BE REQUIRED TO SECURE ALL PERMITS APPLICABLE.
- 9) NEIGHBORHOODS, HOMEOWNERS SHALL INCLUDE WARNING SIGNS AND BARRIERS IN ACCORDANCE WITH THE CITY OF TONTTOWN ORDINANCES. CONTRACTOR SHALL BE REQUIRED TO ADEQUATELY PROTECT THE PUBLIC TWO WAY DRIVEWAY AS PLATING SHALL BE PLACED AS REQUIRED TO ADEQUATELY PROTECT THE PUBLIC TWO WAY DRIVEWAY AT ALL TIMES ON ANY ROAD OR STATE HIGHWAY THAT A UTILITY IS BEING CONSTRUCTED WITHIN.
- 10) EXISTING GROUND SURFACE PROFILE IS SHOWN FOR INFORMATION PURPOSES ONLY AND IS AN APPROXIMATION OF FIELD TOPOGRAPHY.

UTILITY NOTES:

- 1) EXISTING UTILITIES SUCH AS PER INFORMATION, RECORDS, AND/OR SURVEYING DATA, SHALL BE LOCATED THROUGH VARIOUS MEANS. CONTRACTOR SHALL VERIFY EXACT LOCATION AND ELEVATION. CONTRACTOR SHALL BE RESPONSIBLE FOR ALL UTILITIES AND SERVICES DURING THE CONSTRUCTION OF UTILITY IMPROVEMENTS AND SHALL TAKE MEASURES TO PROVIDE PROTECTION AS TO NOT BE DAMAGED.
- 2) ALL COORDINATES AND DIMENSIONS ARE TO THE CENTERLINE OF UTILITIES AND STRUCTURES, UNLESS OTHERWISE NOTED.
- 3) THE CONTRACTOR SHALL CONDUCT AN AIR PRESSURE TEST ON ALL UTILITY LINES PRIOR TO BACKFILLING ANY IMPROVEMENTS.
- 4) THE CONTRACTOR SHALL CONDUCT AN AIR PRESSURE TEST ON ALL UTILITY LINES PRIOR TO BACKFILLING ANY IMPROVEMENTS.
- 5) THE CONTRACTOR SHALL REFER TO SPECIFICATIONS FOR SINKER LINE AND WATER LINE TESTING.
- 6) THE CONTRACTOR SHALL CONDUCT AN AIR PRESSURE TEST ON ALL UTILITY LINES PRIOR TO BACKFILLING ANY IMPROVEMENTS.
- 7) CONTRACTOR SHALL COORDINATE INSTALLATION OF UTILITIES IN SUCH A MANNER AS TO AVOID CONFLICTS AND ASSURE SPECIFIED DEPTHS ARE ACHIEVED.
- 8) CONTRACTOR SHALL SUBMIT A PROTECTION PLAN FOR ALL UTILITIES TO BE PROTECTED. THE PROTECTION PLAN SHALL BE APPROVED BY THE ENGINEER.
- 9) DAMAGE TO SURFACES SHALL BE REPAIRED TO ORIGINAL GRADE AS REQUIRED.
- 10) CONTRACTOR SHALL BE RESPONSIBLE FOR ADJUSTING MANHOLES TO FINAL GRADE AS REQUIRED.
- 11) CONTRACTOR SHALL BE RESPONSIBLE FOR THE PROTECTION OF ALL UTILITIES TO BE PROTECTED. THE PROTECTION PLAN SHALL BE APPROVED BY THE ENGINEER.
- 12) CONTRACTOR SHALL BE RESPONSIBLE FOR THE PROTECTION OF ALL UTILITIES TO BE PROTECTED. THE PROTECTION PLAN SHALL BE APPROVED BY THE ENGINEER.
- 13) CONTRACTOR SHALL BE RESPONSIBLE FOR THE PROTECTION OF ALL UTILITIES TO BE PROTECTED. THE PROTECTION PLAN SHALL BE APPROVED BY THE ENGINEER.
- 14) CONTRACTOR SHALL BE RESPONSIBLE FOR THE PROTECTION OF ALL UTILITIES TO BE PROTECTED. THE PROTECTION PLAN SHALL BE APPROVED BY THE ENGINEER.
- 15) CONTRACTOR SHALL BE RESPONSIBLE FOR THE PROTECTION OF ALL UTILITIES TO BE PROTECTED. THE PROTECTION PLAN SHALL BE APPROVED BY THE ENGINEER.
- 16) CONTRACTOR SHALL BE RESPONSIBLE FOR THE PROTECTION OF ALL UTILITIES TO BE PROTECTED. THE PROTECTION PLAN SHALL BE APPROVED BY THE ENGINEER.
- 17) CONTRACTOR SHALL BE RESPONSIBLE FOR THE PROTECTION OF ALL UTILITIES TO BE PROTECTED. THE PROTECTION PLAN SHALL BE APPROVED BY THE ENGINEER.
- 18) CONTRACTOR SHALL BE RESPONSIBLE FOR THE PROTECTION OF ALL UTILITIES TO BE PROTECTED. THE PROTECTION PLAN SHALL BE APPROVED BY THE ENGINEER.
- 19) CONTRACTOR SHALL BE RESPONSIBLE FOR THE PROTECTION OF ALL UTILITIES TO BE PROTECTED. THE PROTECTION PLAN SHALL BE APPROVED BY THE ENGINEER.
- 20) CONTRACTOR SHALL BE RESPONSIBLE FOR THE PROTECTION OF ALL UTILITIES TO BE PROTECTED. THE PROTECTION PLAN SHALL BE APPROVED BY THE ENGINEER.
- 21) CONTRACTOR SHALL BE RESPONSIBLE FOR THE PROTECTION OF ALL UTILITIES TO BE PROTECTED. THE PROTECTION PLAN SHALL BE APPROVED BY THE ENGINEER.
- 22) CONTRACTOR SHALL BE RESPONSIBLE FOR THE PROTECTION OF ALL UTILITIES TO BE PROTECTED. THE PROTECTION PLAN SHALL BE APPROVED BY THE ENGINEER.
- 23) CONTRACTOR SHALL BE RESPONSIBLE FOR THE PROTECTION OF ALL UTILITIES TO BE PROTECTED. THE PROTECTION PLAN SHALL BE APPROVED BY THE ENGINEER.
- 24) CONTRACTOR SHALL BE RESPONSIBLE FOR THE PROTECTION OF ALL UTILITIES TO BE PROTECTED. THE PROTECTION PLAN SHALL BE APPROVED BY THE ENGINEER.
- 25) CONTRACTOR SHALL BE RESPONSIBLE FOR THE PROTECTION OF ALL UTILITIES TO BE PROTECTED. THE PROTECTION PLAN SHALL BE APPROVED BY THE ENGINEER.
- 26) CONTRACTOR SHALL BE RESPONSIBLE FOR THE PROTECTION OF ALL UTILITIES TO BE PROTECTED. THE PROTECTION PLAN SHALL BE APPROVED BY THE ENGINEER.
- 27) CONTRACTOR SHALL BE RESPONSIBLE FOR THE PROTECTION OF ALL UTILITIES TO BE PROTECTED. THE PROTECTION PLAN SHALL BE APPROVED BY THE ENGINEER.
- 28) CONTRACTOR SHALL BE RESPONSIBLE FOR THE PROTECTION OF ALL UTILITIES TO BE PROTECTED. THE PROTECTION PLAN SHALL BE APPROVED BY THE ENGINEER.
- 29) CONTRACTOR SHALL BE RESPONSIBLE FOR THE PROTECTION OF ALL UTILITIES TO BE PROTECTED. THE PROTECTION PLAN SHALL BE APPROVED BY THE ENGINEER.
- 30) CONTRACTOR SHALL BE RESPONSIBLE FOR THE PROTECTION OF ALL UTILITIES TO BE PROTECTED. THE PROTECTION PLAN SHALL BE APPROVED BY THE ENGINEER.
- 31) CONTRACTOR SHALL BE RESPONSIBLE FOR THE PROTECTION OF ALL UTILITIES TO BE PROTECTED. THE PROTECTION PLAN SHALL BE APPROVED BY THE ENGINEER.
- 32) CONTRACTOR SHALL BE RESPONSIBLE FOR THE PROTECTION OF ALL UTILITIES TO BE PROTECTED. THE PROTECTION PLAN SHALL BE APPROVED BY THE ENGINEER.
- 33) CONTRACTOR SHALL BE RESPONSIBLE FOR THE PROTECTION OF ALL UTILITIES TO BE PROTECTED. THE PROTECTION PLAN SHALL BE APPROVED BY THE ENGINEER.
- 34) CONTRACTOR SHALL BE RESPONSIBLE FOR THE PROTECTION OF ALL UTILITIES TO BE PROTECTED. THE PROTECTION PLAN SHALL BE APPROVED BY THE ENGINEER.
- 35) CONTRACTOR SHALL BE RESPONSIBLE FOR THE PROTECTION OF ALL UTILITIES TO BE PROTECTED. THE PROTECTION PLAN SHALL BE APPROVED BY THE ENGINEER.
- 36) CONTRACTOR SHALL BE RESPONSIBLE FOR THE PROTECTION OF ALL UTILITIES TO BE PROTECTED. THE PROTECTION PLAN SHALL BE APPROVED BY THE ENGINEER.
- 37) CONTRACTOR SHALL BE RESPONSIBLE FOR THE PROTECTION OF ALL UTILITIES TO BE PROTECTED. THE PROTECTION PLAN SHALL BE APPROVED BY THE ENGINEER.
- 38) CONTRACTOR SHALL BE RESPONSIBLE FOR THE PROTECTION OF ALL UTILITIES TO BE PROTECTED. THE PROTECTION PLAN SHALL BE APPROVED BY THE ENGINEER.
- 39) CONTRACTOR SHALL BE RESPONSIBLE FOR THE PROTECTION OF ALL UTILITIES TO BE PROTECTED. THE PROTECTION PLAN SHALL BE APPROVED BY THE ENGINEER.
- 40) CONTRACTOR SHALL BE RESPONSIBLE FOR THE PROTECTION OF ALL UTILITIES TO BE PROTECTED. THE PROTECTION PLAN SHALL BE APPROVED BY THE ENGINEER.
- 41) CONTRACTOR SHALL BE RESPONSIBLE FOR THE PROTECTION OF ALL UTILITIES TO BE PROTECTED. THE PROTECTION PLAN SHALL BE APPROVED BY THE ENGINEER.
- 42) CONTRACTOR SHALL BE RESPONSIBLE FOR THE PROTECTION OF ALL UTILITIES TO BE PROTECTED. THE PROTECTION PLAN SHALL BE APPROVED BY THE ENGINEER.
- 43) CONTRACTOR SHALL BE RESPONSIBLE FOR THE PROTECTION OF ALL UTILITIES TO BE PROTECTED. THE PROTECTION PLAN SHALL BE APPROVED BY THE ENGINEER.
- 44) CONTRACTOR SHALL BE RESPONSIBLE FOR THE PROTECTION OF ALL UTILITIES TO BE PROTECTED. THE PROTECTION PLAN SHALL BE APPROVED BY THE ENGINEER.
- 45) CONTRACTOR SHALL BE RESPONSIBLE FOR THE PROTECTION OF ALL UTILITIES TO BE PROTECTED. THE PROTECTION PLAN SHALL BE APPROVED BY THE ENGINEER.
- 46) CONTRACTOR SHALL BE RESPONSIBLE FOR THE PROTECTION OF ALL UTILITIES TO BE PROTECTED. THE PROTECTION PLAN SHALL BE APPROVED BY THE ENGINEER.
- 47) CONTRACTOR SHALL BE RESPONSIBLE FOR THE PROTECTION OF ALL UTILITIES TO BE PROTECTED. THE PROTECTION PLAN SHALL BE APPROVED BY THE ENGINEER.
- 48) CONTRACTOR SHALL BE RESPONSIBLE FOR THE PROTECTION OF ALL UTILITIES TO BE PROTECTED. THE PROTECTION PLAN SHALL BE APPROVED BY THE ENGINEER.
- 49) CONTRACTOR SHALL BE RESPONSIBLE FOR THE PROTECTION OF ALL UTILITIES TO BE PROTECTED. THE PROTECTION PLAN SHALL BE APPROVED BY THE ENGINEER.
- 50) CONTRACTOR SHALL BE RESPONSIBLE FOR THE PROTECTION OF ALL UTILITIES TO BE PROTECTED. THE PROTECTION PLAN SHALL BE APPROVED BY THE ENGINEER.



FULL DEPTH TYPICAL SECTION FOR HALF STREET IMPROVEMENTS

NTS

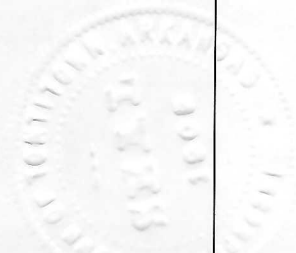
ALL STREETS AND SIDEWALKS ARE TO BE BUILT IN ACCORDANCE WITH CHAPTER 90 OF THE TONTTOWN CODE OF ORDINANCES



CITY OF TONTTOWN
2300 TONTTOWN AVENUE
TONTTOWN, MISSOURI 63059

MANTEGANI ROAD HALF STREET IMPROVEMENTS
TONTTOWN, AR

REVISION	
DATE	
PROJECT NO.	T-2023-001
SHEET	C-002

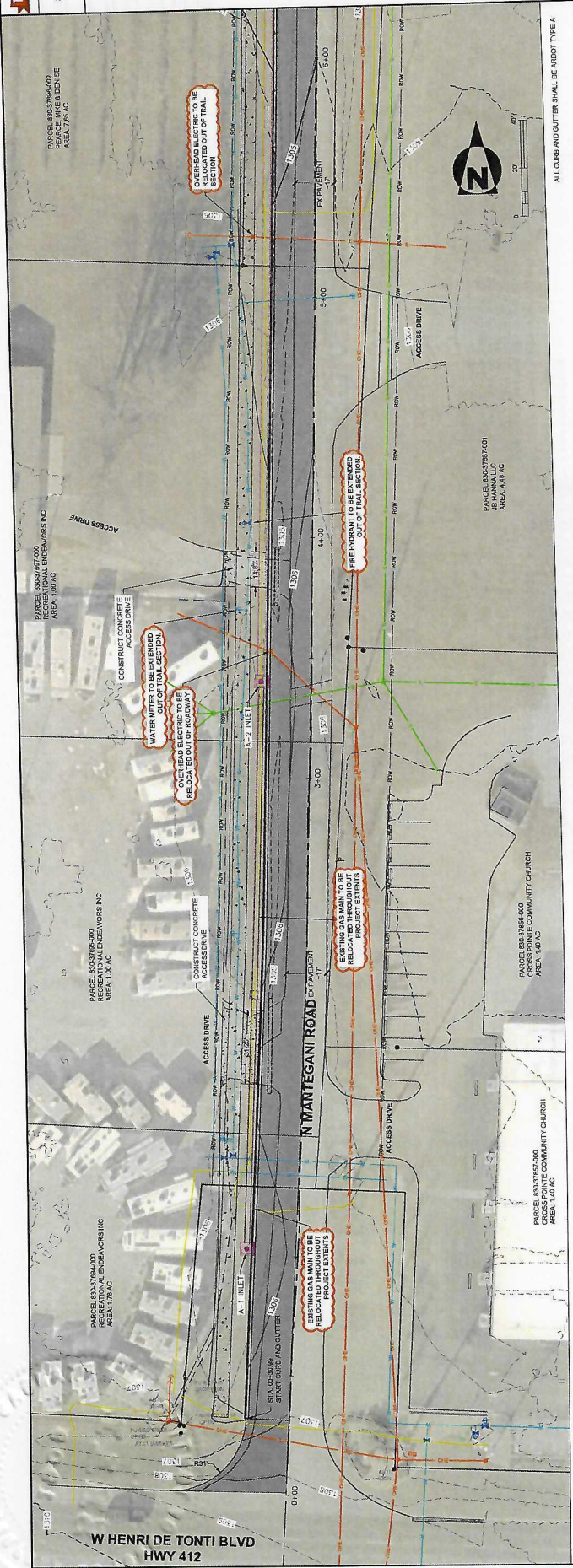




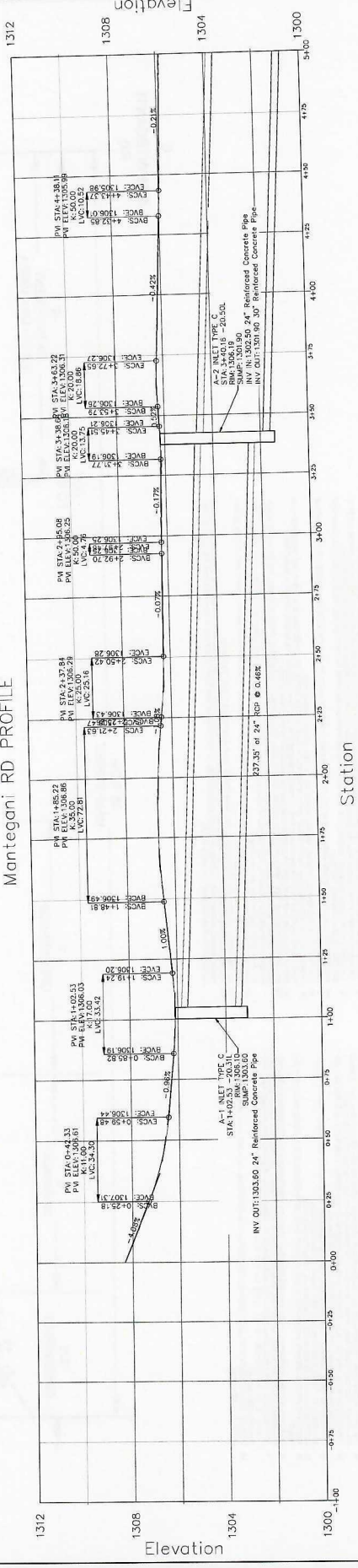
CITY OF TONTITOWN
315 WEST MAIN ST. TONTITOWN, AR 72759
PHONE: 479-253-1300
FAX: 479-253-2099

MANTEGANI ROAD HALF STREET IMPROVEMENTS
TONTITOWN, AR

REVISION	
DRAWN BY	
DATE	03/21/2027
PROJECT NO.	1-2003091
SHEET	C-101



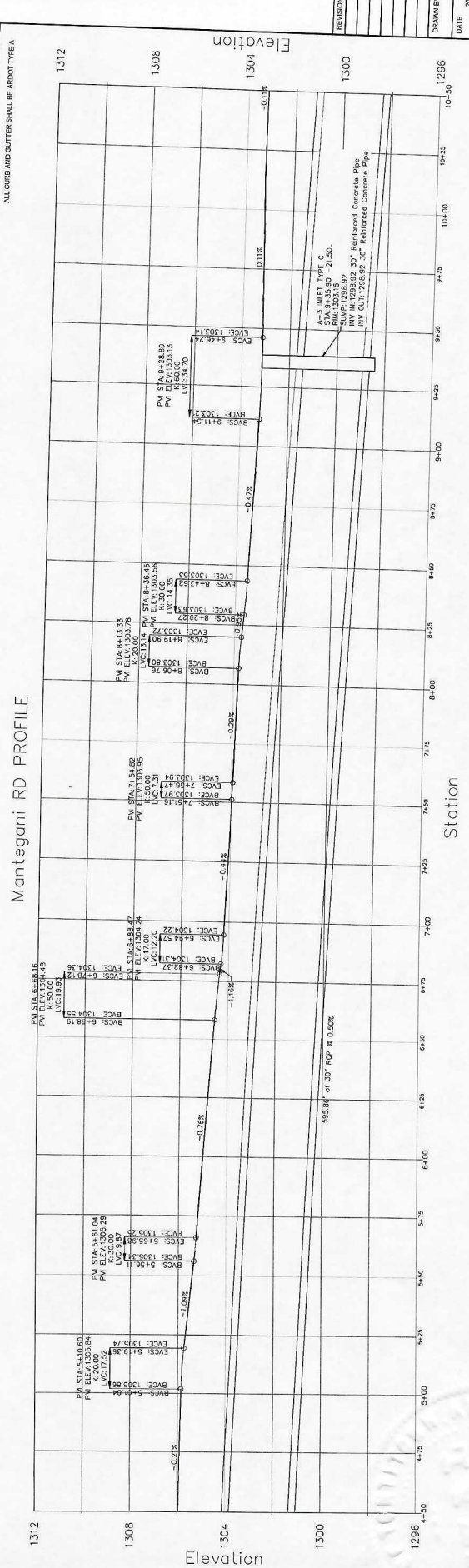
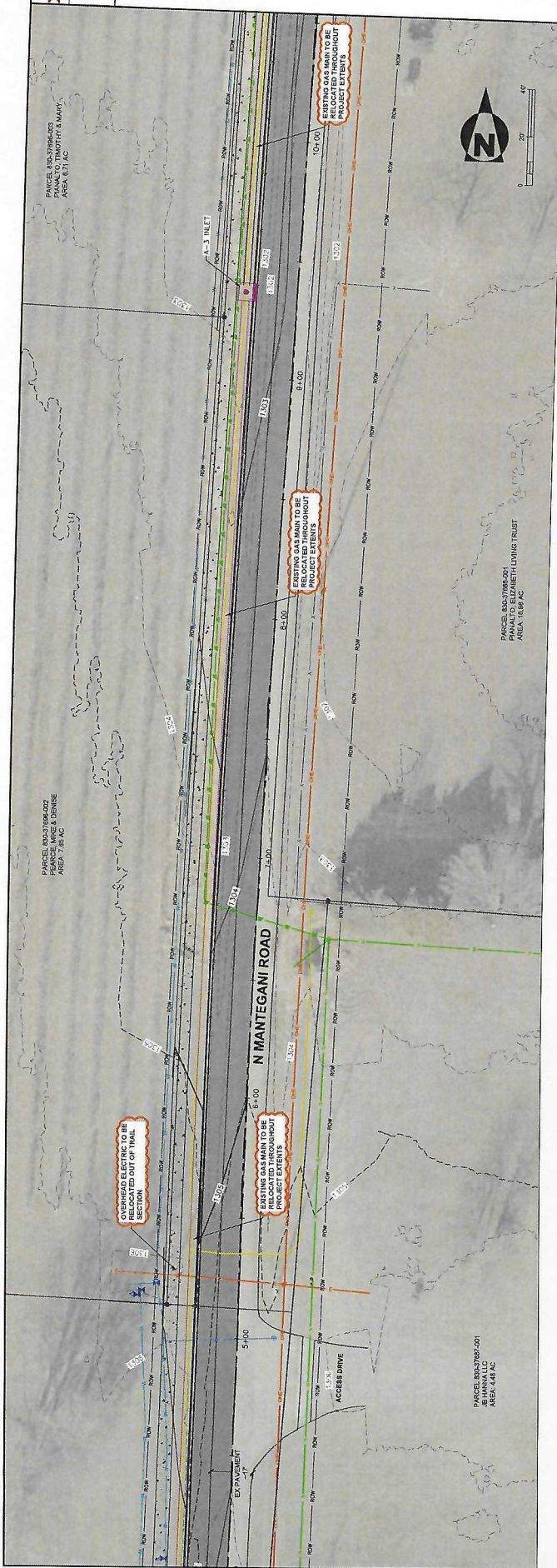
Mantegani RD PROFILE



W HENRI DE TONTI BLVD
HWY 412

ALL CURB AND GUTTER SHALL BE ABOUT TYPE A

DATE	2022/11/27
PROJECT NO.	17322001
SHEET	17322001
DRAWN BY	
REVISION	



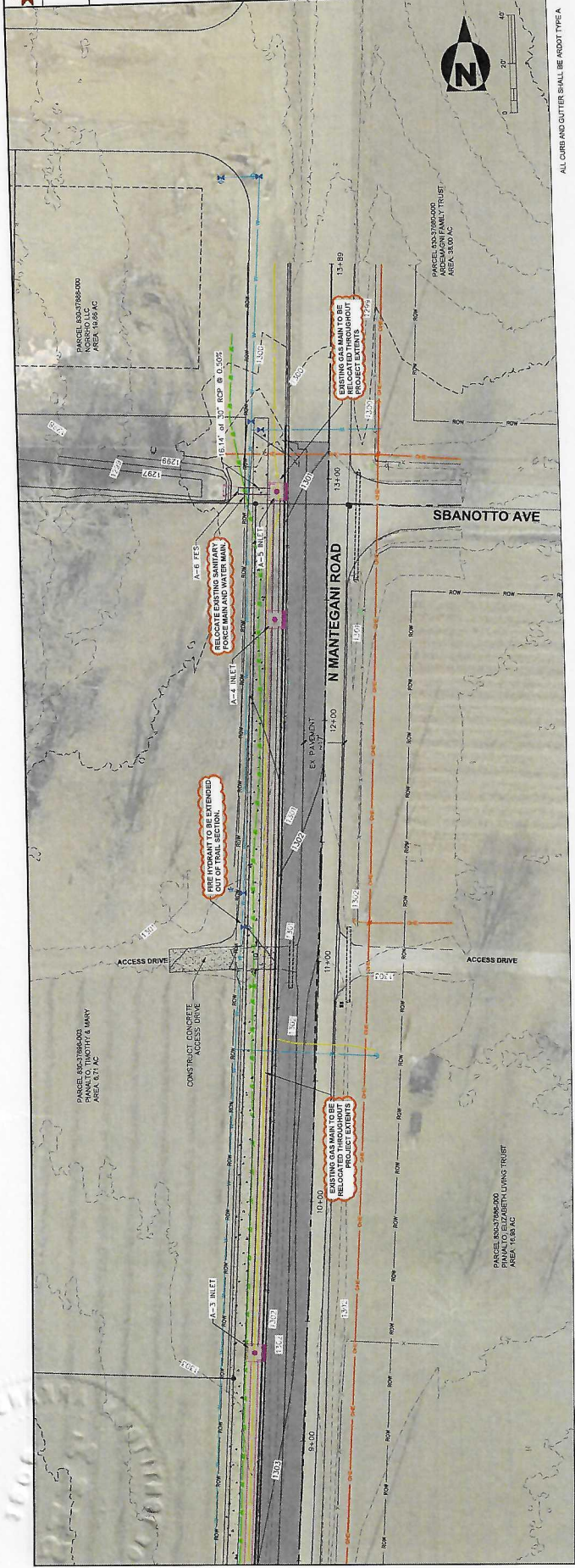


335 E SPRING ST
TONTOWN, AR 72201
703.281.1227

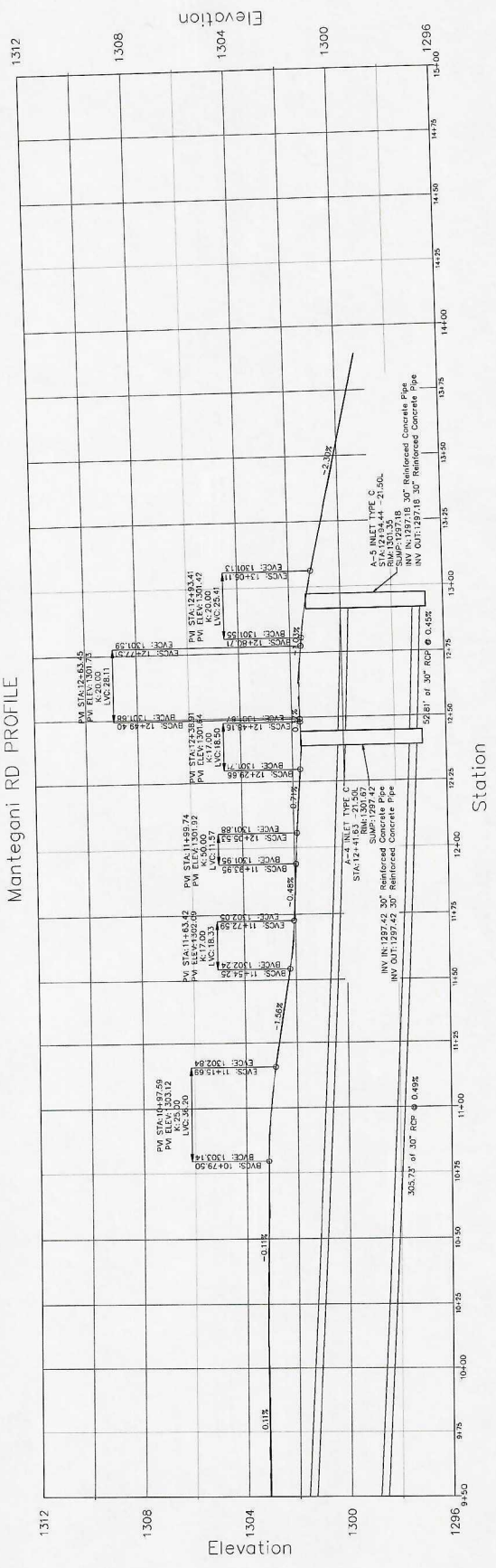
MANTEGANI ROAD HALF STREET IMPROVEMENTS

TONTOWN, AR

DATE	2022/11/27
PROJECT NO.	72222001
SHEET	C-103
DRAWN BY	
REVISION	



Mantegani RD PROFILE



Station

Elevation

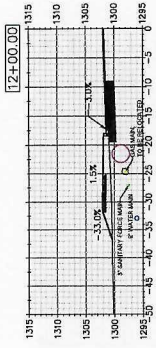
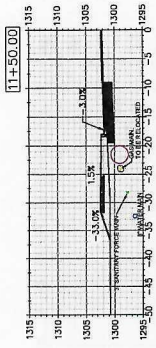
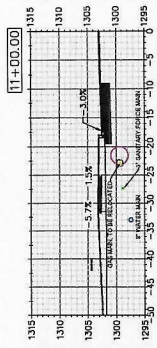
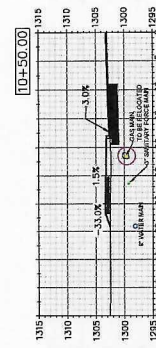
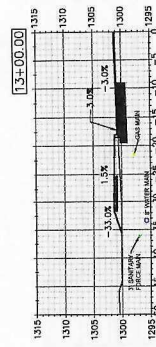
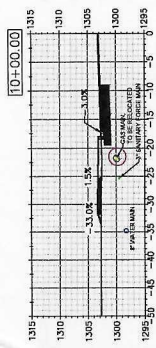
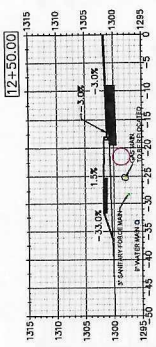
C-103

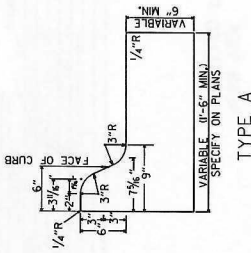


CITY OF TONTITOWN
 275 EAST MAIN, SUITE 100
 TONTITOWN, AR 72783
 (479) 241-2200

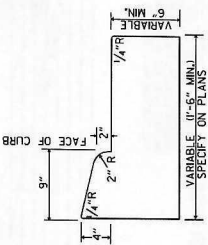
MANTEGANI ROAD HALF STREET IMPROVEMENTS
 TONTITOWN, AR

REVISION	
DATE	2/20/21/027
DRAWN BY	
PROJECT NO.	1-2023001
SHEET	C-202

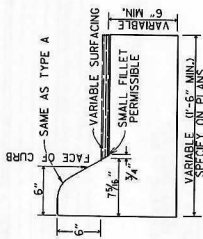




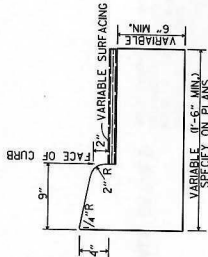
TYPE A



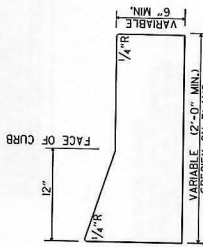
TYPE B-1



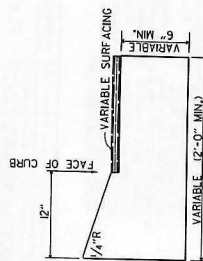
TYPE C



TYPE B-2

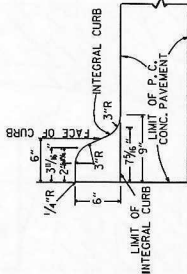


TYPE E-1

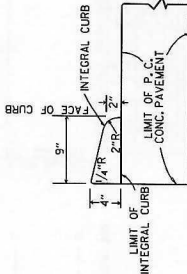


TYPE E-2

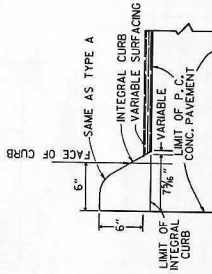
CONCRETE COMBINATION CURB AND GUTTER



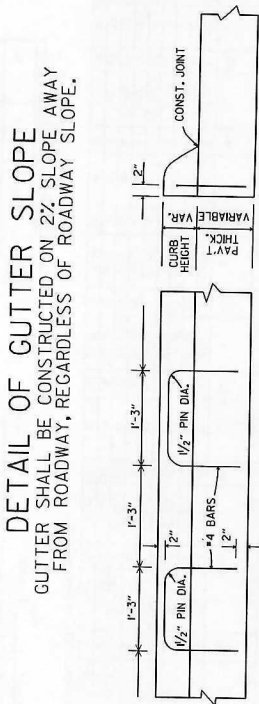
TYPE A



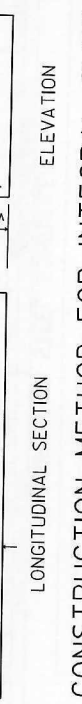
TYPE B



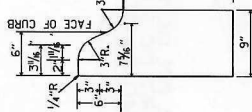
TYPE C



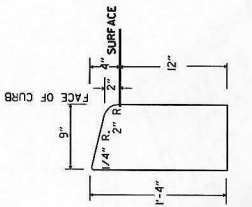
DETAIL OF GUTTER SLOPE
 GUTTER SHALL BE CONSTRUCTED ON 2% SLOPE AWAY FROM ROADWAY, REGARDLESS OF ROADWAY SLOPE.



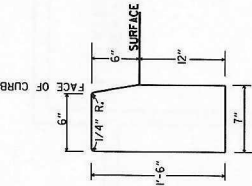
LONGITUDINAL SECTION
 ELEVATION



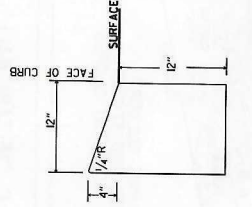
TYPE A



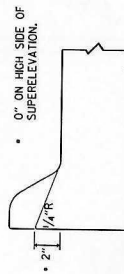
TYPE B



TYPE D



TYPE E



NOTE: USE MODIFIED CURB AS SPECIFIED ON STD. DR-1 COMPENSATION FOR MODIFIED CURB WILL BE CONSIDERED INCLUDED IN THE PRICE BID FOR THE TYPE OF CURB OR CURB AND GUTTER SPECIFIED.

DETAILS OF MODIFIED CURB

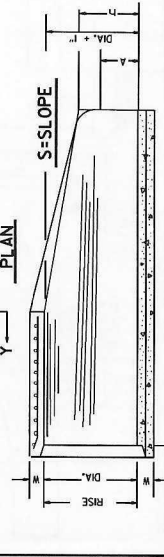
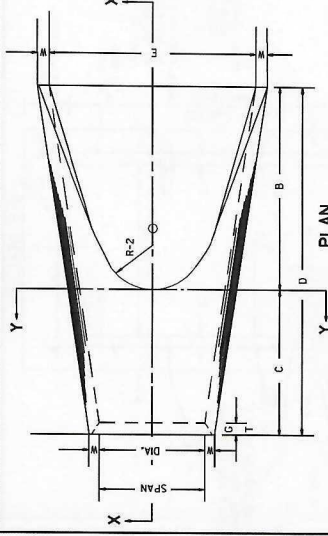
ALTERNATE CONSTRUCTION METHOD FOR INTEGRAL CURB

NO.	DATE	DESCRIPTION	BY	CHECKED
1	12-20-07	REVISED GUTTER SLOPE & MODIFIED CURB DETAILS		
2	12-20-07	ADDED DETAILS OF TYPE E CURBS		
3	12-20-07	REVISED CURB TYPE B		
4	12-20-07	ADDED DETAIL OF MODIFIED CURB		
5	12-20-07	ADDED DETAIL OF MODIFIED CURB		
6	12-20-07	ADDED DETAIL OF MODIFIED CURB		
7	12-20-07	ADDED DETAIL OF MODIFIED CURB		
8	12-20-07	ADDED DETAIL OF MODIFIED CURB		
9	12-20-07	ADDED DETAIL OF MODIFIED CURB		
10	12-20-07	ADDED DETAIL OF MODIFIED CURB		
11	12-20-07	ADDED DETAIL OF MODIFIED CURB		
12	12-20-07	ADDED DETAIL OF MODIFIED CURB		
13	12-20-07	ADDED DETAIL OF MODIFIED CURB		
14	12-20-07	ADDED DETAIL OF MODIFIED CURB		
15	12-20-07	ADDED DETAIL OF MODIFIED CURB		
16	12-20-07	ADDED DETAIL OF MODIFIED CURB		
17	12-20-07	ADDED DETAIL OF MODIFIED CURB		
18	12-20-07	ADDED DETAIL OF MODIFIED CURB		
19	12-20-07	ADDED DETAIL OF MODIFIED CURB		
20	12-20-07	ADDED DETAIL OF MODIFIED CURB		
21	12-20-07	ADDED DETAIL OF MODIFIED CURB		
22	12-20-07	ADDED DETAIL OF MODIFIED CURB		
23	12-20-07	ADDED DETAIL OF MODIFIED CURB		
24	12-20-07	ADDED DETAIL OF MODIFIED CURB		
25	12-20-07	ADDED DETAIL OF MODIFIED CURB		
26	12-20-07	ADDED DETAIL OF MODIFIED CURB		
27	12-20-07	ADDED DETAIL OF MODIFIED CURB		
28	12-20-07	ADDED DETAIL OF MODIFIED CURB		
29	12-20-07	ADDED DETAIL OF MODIFIED CURB		
30	12-20-07	ADDED DETAIL OF MODIFIED CURB		
31	12-20-07	ADDED DETAIL OF MODIFIED CURB		
32	12-20-07	ADDED DETAIL OF MODIFIED CURB		
33	12-20-07	ADDED DETAIL OF MODIFIED CURB		
34	12-20-07	ADDED DETAIL OF MODIFIED CURB		
35	12-20-07	ADDED DETAIL OF MODIFIED CURB		
36	12-20-07	ADDED DETAIL OF MODIFIED CURB		
37	12-20-07	ADDED DETAIL OF MODIFIED CURB		
38	12-20-07	ADDED DETAIL OF MODIFIED CURB		
39	12-20-07	ADDED DETAIL OF MODIFIED CURB		
40	12-20-07	ADDED DETAIL OF MODIFIED CURB		
41	12-20-07	ADDED DETAIL OF MODIFIED CURB		
42	12-20-07	ADDED DETAIL OF MODIFIED CURB		
43	12-20-07	ADDED DETAIL OF MODIFIED CURB		
44	12-20-07	ADDED DETAIL OF MODIFIED CURB		
45	12-20-07	ADDED DETAIL OF MODIFIED CURB		
46	12-20-07	ADDED DETAIL OF MODIFIED CURB		
47	12-20-07	ADDED DETAIL OF MODIFIED CURB		
48	12-20-07	ADDED DETAIL OF MODIFIED CURB		
49	12-20-07	ADDED DETAIL OF MODIFIED CURB		
50	12-20-07	ADDED DETAIL OF MODIFIED CURB		
51	12-20-07	ADDED DETAIL OF MODIFIED CURB		
52	12-20-07	ADDED DETAIL OF MODIFIED CURB		
53	12-20-07	ADDED DETAIL OF MODIFIED CURB		
54	12-20-07	ADDED DETAIL OF MODIFIED CURB		
55	12-20-07	ADDED DETAIL OF MODIFIED CURB		
56	12-20-07	ADDED DETAIL OF MODIFIED CURB		
57	12-20-07	ADDED DETAIL OF MODIFIED CURB		
58	12-20-07	ADDED DETAIL OF MODIFIED CURB		
59	12-20-07	ADDED DETAIL OF MODIFIED CURB		
60	12-20-07	ADDED DETAIL OF MODIFIED CURB		
61	12-20-07	ADDED DETAIL OF MODIFIED CURB		
62	12-20-07	ADDED DETAIL OF MODIFIED CURB		
63	12-20-07	ADDED DETAIL OF MODIFIED CURB		
64	12-20-07	ADDED DETAIL OF MODIFIED CURB		
65	12-20-07	ADDED DETAIL OF MODIFIED CURB		
66	12-20-07	ADDED DETAIL OF MODIFIED CURB		
67	12-20-07	ADDED DETAIL OF MODIFIED CURB		
68	12-20-07	ADDED DETAIL OF MODIFIED CURB		
69	12-20-07	ADDED DETAIL OF MODIFIED CURB		
70	12-20-07	ADDED DETAIL OF MODIFIED CURB		
71	12-20-07	ADDED DETAIL OF MODIFIED CURB		
72	12-20-07	ADDED DETAIL OF MODIFIED CURB		
73	12-20-07	ADDED DETAIL OF MODIFIED CURB		
74	12-20-07	ADDED DETAIL OF MODIFIED CURB		
75	12-20-07	ADDED DETAIL OF MODIFIED CURB		
76	12-20-07	ADDED DETAIL OF MODIFIED CURB		
77	12-20-07	ADDED DETAIL OF MODIFIED CURB		
78	12-20-07	ADDED DETAIL OF MODIFIED CURB		
79	12-20-07	ADDED DETAIL OF MODIFIED CURB		
80	12-20-07	ADDED DETAIL OF MODIFIED CURB		
81	12-20-07	ADDED DETAIL OF MODIFIED CURB		
82	12-20-07	ADDED DETAIL OF MODIFIED CURB		
83	12-20-07	ADDED DETAIL OF MODIFIED CURB		
84	12-20-07	ADDED DETAIL OF MODIFIED CURB		
85	12-20-07	ADDED DETAIL OF MODIFIED CURB		
86	12-20-07	ADDED DETAIL OF MODIFIED CURB		
87	12-20-07	ADDED DETAIL OF MODIFIED CURB		
88	12-20-07	ADDED DETAIL OF MODIFIED CURB		
89	12-20-07	ADDED DETAIL OF MODIFIED CURB		
90	12-20-07	ADDED DETAIL OF MODIFIED CURB		
91	12-20-07	ADDED DETAIL OF MODIFIED CURB		
92	12-20-07	ADDED DETAIL OF MODIFIED CURB		
93	12-20-07	ADDED DETAIL OF MODIFIED CURB		
94	12-20-07	ADDED DETAIL OF MODIFIED CURB		
95	12-20-07	ADDED DETAIL OF MODIFIED CURB		
96	12-20-07	ADDED DETAIL OF MODIFIED CURB		
97	12-20-07	ADDED DETAIL OF MODIFIED CURB		
98	12-20-07	ADDED DETAIL OF MODIFIED CURB		
99	12-20-07	ADDED DETAIL OF MODIFIED CURB		
100	12-20-07	ADDED DETAIL OF MODIFIED CURB		

ARIZONA STATE HIGHWAY COMMISSION

DATE FILMED
 REVISION
 STANDARD DRAWING CG-1

CURBING DETAILS



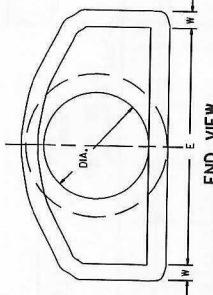
SECTION X-X
END SECTION FOR REINFORCED CONCRETE PIPE CULVERTS

TABLE OF DIMENSIONS

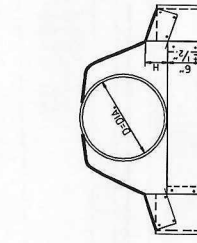
DIA.	WALL	A	B	C	D	E	S	R-1	R-2	G-T	WT.	h		
18"	2 1/2"	9"	2'-3"	3'-10"	6'-1"	3'-0"	3H	19"	23"	15 1/2"	12"	2"	1000	1'-0 1/2"
24"	3"	9 1/2"	3'-7 1/2"	2'-8"	6'-1 1/2"	4'-0"	3H	25"	33 3/4"	18 3/4"	14"	2 1/2"	1600	1'-0 1/2"
30"	3 1/2"	1'-0"	4'-6"	1'-7 1/2"	6'-3 1/2"	5'-0"	3H	31"	37"	18 3/4"	15"	3 1/4"	1940	1'-4 3/4"
36"	4"	1'-3"	5'-3"	2'-10 1/2"	8'-1 1/2"	6'-0"	3H	37"	47 1/4"	24 1/4"	20"	3 1/2"	4000	1'-8"
42"	4 1/2"	2'-0"	6'-0"	3'-0"	8'-2"	6'-6"	3H	43"	53 1/4"	27 1/2"	22"	3 3/4"	5350	2'-2 1/2"
48"	5"	2'-4"	6'-8"	4'-0"	9'-4"	7'-6"	3H	49"	61 1/4"	31 1/4"	24"	4"	6550	2'-6"
54"	5 1/2"	2'-8"	7'-6"	5'-0"	10'-6"	8'-6"	3H	55"	69 1/4"	35 1/4"	26"	4 1/2"	8270	3'-2"
60"	6"	3'-2"	8'-4"	6'-0"	11'-8"	9'-6"	3H	61"	77 1/4"	39 1/4"	28"	5"	10270	3'-6"
72"	7"	3'-10"	9'-6"	7'-0"	13'-0"	11'-0"	3H	73"	85 3/4"	43 3/4"	30"	5 1/2"	12950	4'-6"

SECTION Y-Y
END SECTION FOR REINFORCED CONCRETE PIPE CULVERTS

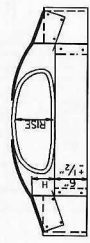
END VIEW
CONCRETE ARCH PIPE



END VIEW
MULTIPLE R.C. PIPE CULVERTS



CIRCULAR PIPE



C.M. ARCH PIPE

CIRCULAR PIPE

DIA.	RISE	A	B	H	L	W	S
12	18	6	6	6	12	24	27/4"
15	18	7	8	6	12	30	27/4"
18	18	8	10	6	12	36	27/4"
21	18	9	12	6	12	42	27/4"
24	18	10	14	6	12	48	27/4"
30	14	12	16	8	12	60	27/4"
36	12	14	18	8	12	72	27/4"
42	12	16	20	8	12	84	27/4"
48	12	18	22	8	12	96	27/4"
60	12	20	24	8	12	120	27/4"
66	12	18	26	12	12	108	17/8"
72	12	18	30	12	12	126	17/8"

C.M. ARCH PIPE

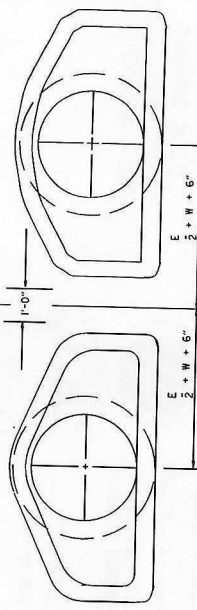
EQUIV. DIA.	SPAN	RISE	A	B	H	L	W	S
18"	17	13	7	10	6	18	30	27/4"
24"	24	18	8	12	6	24	36	27/4"
30"	30	18	10	14	6	30	42	27/4"
36"	36	20	12	16	6	36	48	27/4"
42"	42	24	14	18	6	42	54	27/4"
48"	48	24	16	20	6	48	60	27/4"
54"	54	24	18	22	6	54	66	27/4"
60"	60	24	20	24	6	60	72	27/4"
66"	66	24	18	26	12	66	81	17/8"
72"	72	24	18	30	12	72	90	17/8"

ARCH PIPE

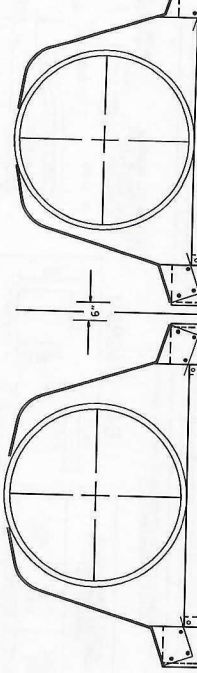
EQUIV. DIA.	SPAN	RISE	A	B	C	D	E	P	R2	G-T	S
15	18	11	2"	4"	2'-0"	4'-0"	6'-0"	3'-0"	29"	10"	27/4"
20	22	13 1/2"	2 1/2"	5"	2'-0"	4'-4"	6'-1"	3'-6"	32 1/2"	13"	27/4"
24	28 1/2"	16	3"	7"	2'-3"	3'-10"	6'-1"	4'-0"	34 1/2"	18"	27/4"
30	36 1/2"	20	3 1/2"	10"	2'-3"	3'-10"	6'-1"	5'-0"	36 1/2"	18"	27/4"
36	43 1/2"	24	4"	10 1/2"	4'-0"	2'-7 1/2"	6'-1"	6'-0"	38 1/2"	20"	27/4"
42	51 1/2"	28	4 1/2"	11"	4'-0"	2'-7 1/2"	6'-1"	6'-0"	40 1/2"	22"	27/4"
48	59 1/2"	32	5"	11 1/2"	4'-7"	1'-10"	6'-1"	7'-0"	42 1/2"	24"	27/4"
54	67 1/2"	36	5 1/2"	12"	4'-7"	1'-10"	6'-1"	7'-0"	44 1/2"	24"	27/4"
60	75 1/2"	40	6"	12 1/2"	5'-3"	2'-8"	8'-2"	8'-5"	46 1/2"	24"	27/4"
66	83 1/2"	44	6 1/2"	13"	5'-3"	2'-8"	8'-2"	8'-5"	48 1/2"	24"	27/4"
72	91 1/2"	48	7"	13 1/2"	5'-3"	2'-8"	8'-2"	8'-5"	50 1/2"	24"	27/4"

* FROM THE VALUES SPECIFIED BY AASHTO M 206.

END VIEW
MULTIPLE R.C. PIPE CULVERTS



END VIEW
MULTIPLE C.M. PIPE CULVERTS

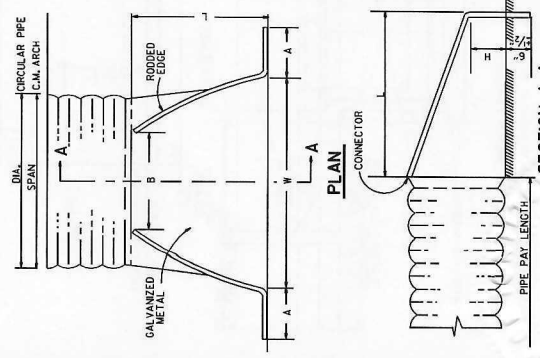


REVISIONS
 10-27-72 REVISED AND REDRAWN
 10-27-72
 5-24-73 CAP END SECTION SHOW PIPE TAIL POSITION
 9-22-75 ADDED MULTIPLE PIPE CULVERTS
 7-14-78 C.M. ARCH SIZES TO CONFORM WITH AASHTO STANDARDS
 9-28-80 REVISED DRAWING PER AASHTO
 7-14-78
 1-28-80 REVISED DRAWING PER AASHTO
 661-5-91-80 ARKANSAS STATE HIGHWAY COMMISSION

NOTE: ALTERNATE CONNECTIONS TO THE PIPE CULVERTS, IN ACCORDANCE WITH MANUFACTURER'S STANDARD PRACTICES, MAY BE MADE SUBJECT TO THE APPROVAL OF THE ENGINEER.

END SECTIONS FOR CORRUGATED METAL PIPE CULVERTS

SECTION A-A
 PLAN
 CONNECTOR
 PIPE PAY LENGTH



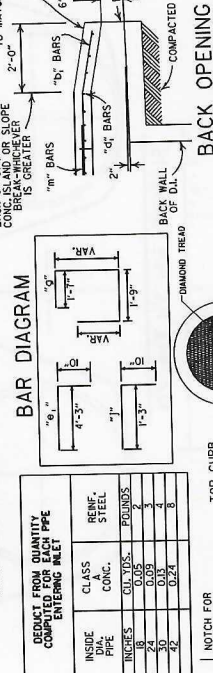
STANDARD DRAWING FES-2

4'-0" LENGTH DROP INLET

PIPE SIZE	MIN. WIDTH	CLASS A CONCRETE CUL.YDS.	CLASS A STEEL POUNDS	PLUS OR MINUS PER LIN. FT. OF HEIGHT		CLASS B CONCRETE CUL.YDS.	CLASS B STEEL POUNDS	REIN. STEEL POUNDS
				CONCRETE	STEEL			
18"	2'-6"	1.17	156	0.28	22	0.38	38	0.87
24"	2'-6"	1.13	156	0.28	22	0.38	38	0.87
30"	3'-6"	2.36	312	0.56	44	0.76	76	1.74
42"	4'-6"	3.21	425	0.76	60	1.04	104	2.40
48"	4'-0"	3.21	425	0.76	60	1.04	104	2.40

DEDUCT FROM QUANTITY COMPUTED FOR EACH EXTENSION ADDED.

NOTE: QUANTITIES ARE APPROXIMATE AND ARE SHOWN FOR BIDDER INFORMATION ONLY.

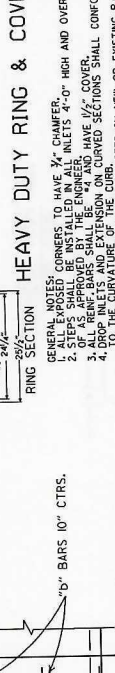


BACK OPENING



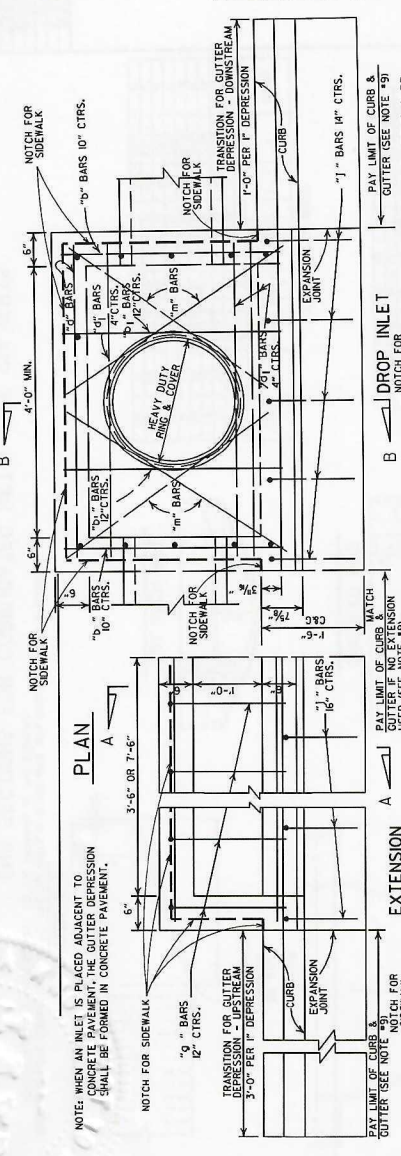
WHEN OPENING IN BACK IS CALLED FOR ON DETAIL, PAYMENT TO BE INCLUDED IN PRICE BID FOR DROP INLET (TYPE C).

HEAVY DUTY RING & COVER

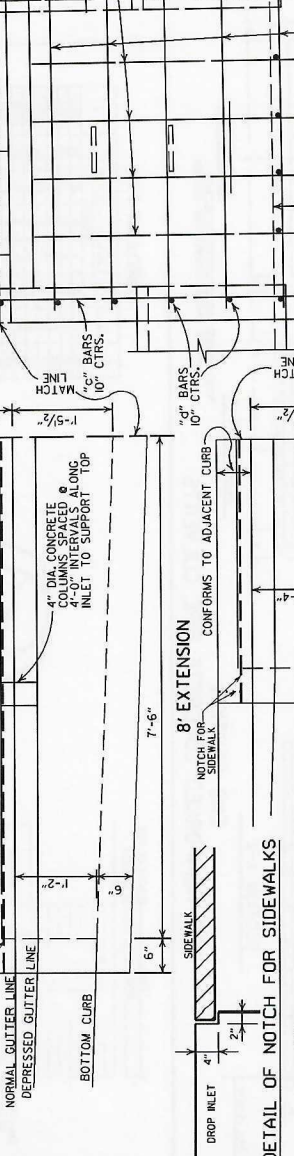


REINFORCED CORNERS TO HAVE 3/4" CHAMFER. STEPS SHALL BE INSTALLED UNDER INLETS 4'-0" HIGH AND OVER. ALL REINFORCING BARS SHALL BE #4 AND HAVE 1/2" COVER. DROP INLETS AND EXTENSION CURBS AND COVERED SECTIONS SHALL CONFORM TO THE STANDARD SPECIFICATIONS FOR CONCRETE AND REINFORCING BARS. CLEARANCE SHALL BE MAINTAINED FOR DROP INLET OVER 10'-0" HIGH FLOOR AND WALLS SHALL BE CONSTRUCTED AS SHOWN FOR TYPE RHP DROP INLET. HEAVY DUTY RING SHALL ALWAYS BE INSTALLED WITH FLANGE ON TOP. DURING CONSTRUCTION, IN OR AROUND THE DROP INLET SHALL BE APPROVED BY THE ENGINEER. PAYMENT FOR CURB AND COVER WITHIN THE LIMITS OF DROP INLET SHALL BE INCLUDED IN THE PRICE BID FOR DROP INLET. HEAVY DUTY RING AND COVER SHALL BE CONSIDERED INCLUDED IN PAYMENT MADE FOR DROP INLETS AND/OR DROP INLET EXTENSIONS. SPECIFICATIONS FOR GRAY IRON CASTINGS ASHTO M05 SHALL BE USED FOR SOEWALK CLASS DUTY RING AND COVER SHALL NOT BE PAINTED TO SUPPORT SOEWALK. CLASS DUTY RING SHALL BE FORMED IN PLACE FOR SOEWALKS. DIMENSIONS SHOWN FOR RING AND COVER ARE TYPICAL. THE CONTRACTOR MAY SUBSTITUTE SIMILAR CASTINGS WITH THE DESIGNER'S APPROVAL. ALL DIMENSIONS SHALL BE IN ACCORDANCE WITH THE PREVIOUSLY APPROVED DRAWINGS.

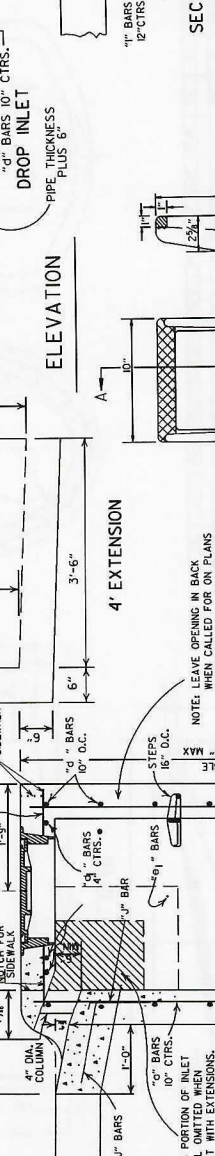
PLAN



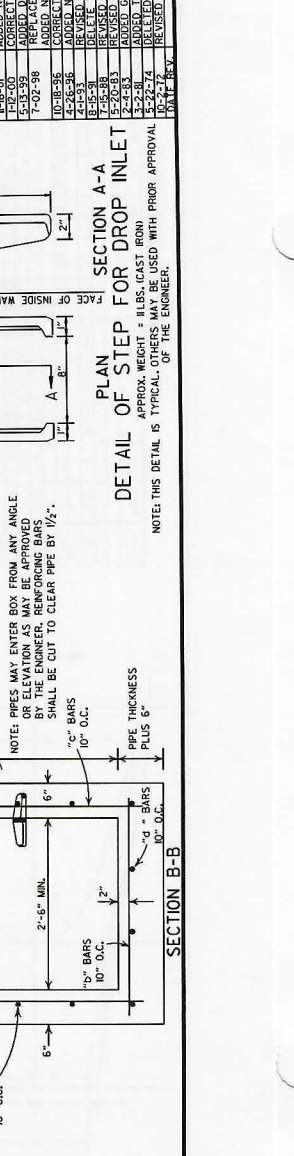
ELEVATION



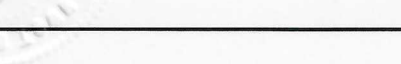
SECTION A-A



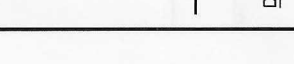
SECTION B-B



DETAIL OF NOTCH FOR SIDEWALKS



DETAIL OF STEP FOR DROP INLET



DETAIL OF NOTCH FOR SIDEWALKS



DETAIL OF NOTCH FOR SIDEWALKS



NOTE: THIS DETAIL IS TYPICAL OF THE ENGINEER'S DESIGN. APPROX. WEIGHT = 18 LBS. (CAST IRON) USED WITH PRIOR APPROVAL OF THE ENGINEER.

REVISION	DATE	BY
1	10-1-72	REVISION
2	10-1-72	REVISION
3	10-1-72	REVISION
4	10-1-72	REVISION
5	10-1-72	REVISION
6	10-1-72	REVISION
7	10-1-72	REVISION
8	10-1-72	REVISION
9	10-1-72	REVISION
10	10-1-72	REVISION
11	10-1-72	REVISION
12	10-1-72	REVISION
13	10-1-72	REVISION
14	10-1-72	REVISION
15	10-1-72	REVISION
16	10-1-72	REVISION
17	10-1-72	REVISION
18	10-1-72	REVISION
19	10-1-72	REVISION
20	10-1-72	REVISION
21	10-1-72	REVISION
22	10-1-72	REVISION
23	10-1-72	REVISION
24	10-1-72	REVISION
25	10-1-72	REVISION
26	10-1-72	REVISION
27	10-1-72	REVISION
28	10-1-72	REVISION
29	10-1-72	REVISION
30	10-1-72	REVISION
31	10-1-72	REVISION
32	10-1-72	REVISION
33	10-1-72	REVISION
34	10-1-72	REVISION
35	10-1-72	REVISION
36	10-1-72	REVISION
37	10-1-72	REVISION
38	10-1-72	REVISION
39	10-1-72	REVISION
40	10-1-72	REVISION
41	10-1-72	REVISION
42	10-1-72	REVISION
43	10-1-72	REVISION
44	10-1-72	REVISION
45	10-1-72	REVISION
46	10-1-72	REVISION
47	10-1-72	REVISION
48	10-1-72	REVISION
49	10-1-72	REVISION
50	10-1-72	REVISION
51	10-1-72	REVISION
52	10-1-72	REVISION
53	10-1-72	REVISION
54	10-1-72	REVISION
55	10-1-72	REVISION
56	10-1-72	REVISION
57	10-1-72	REVISION
58	10-1-72	REVISION
59	10-1-72	REVISION
60	10-1-72	REVISION
61	10-1-72	REVISION
62	10-1-72	REVISION
63	10-1-72	REVISION
64	10-1-72	REVISION
65	10-1-72	REVISION
66	10-1-72	REVISION
67	10-1-72	REVISION
68	10-1-72	REVISION
69	10-1-72	REVISION
70	10-1-72	REVISION
71	10-1-72	REVISION
72	10-1-72	REVISION
73	10-1-72	REVISION
74	10-1-72	REVISION
75	10-1-72	REVISION
76	10-1-72	REVISION
77	10-1-72	REVISION
78	10-1-72	REVISION
79	10-1-72	REVISION
80	10-1-72	REVISION
81	10-1-72	REVISION
82	10-1-72	REVISION
83	10-1-72	REVISION
84	10-1-72	REVISION
85	10-1-72	REVISION
86	10-1-72	REVISION
87	10-1-72	REVISION
88	10-1-72	REVISION
89	10-1-72	REVISION
90	10-1-72	REVISION
91	10-1-72	REVISION
92	10-1-72	REVISION
93	10-1-72	REVISION
94	10-1-72	REVISION
95	10-1-72	REVISION
96	10-1-72	REVISION
97	10-1-72	REVISION
98	10-1-72	REVISION
99	10-1-72	REVISION
100	10-1-72	REVISION

ARKANSAS STATE HIGHWAY COMMISSION
DETAILS OF DROP INLETS
(TYPE C)
STANDARD DRAWING FPC-9E

Washington County, AR
Circuit Clerk's Office
2024-00004529



Washington County, AR
I certify this instrument was filed on
02/27/2024 02:15:16 PM
and recorded in Real Estate
File Number 2024-00004529
Kyle Sylvester - Circuit Clerk
by 