

RESOLUTION NO. 2025-02-1130R

CITY OF TONTITOWN, WASHINGTON COUNTY, ARKANSAS

A RESOLUTION TO AUTHORIZE THE PURCHASE OF ONE (1) USED 2020 FORD SUPER DUTY F-250 SRW FROM DUNN FORD COMPANY FOR THE TONTITOWN STREET DEPARTMENT.

WHEREAS, the City of Tontitown received a quote from Dunn Ford Company for one (1) used 2020 Ford Super Duty F-250 SRW in the amount of \$36,900.00 for the Tontitown Street Department, attached hereto as Exhibit "A"; and

WHEREAS, the City Council has determined that sufficient funds are available for the purchase of the vehicle in the amount of \$36,900.00; and

WHEREAS, the City Council has determined that it is in the best interest and benefit of the community to authorize the Mayor to purchase one (1) used 2020 Ford Super Duty F-250 SRW from Dunn Ford Company for the amount of \$36,900.00, attached hereto as Exhibit "A", for the Tontitown Street Department.

NOW, THEREFORE, BE IT RESOLVED, by the City Council of the City of Tontitown, Arkansas:

Section 1. The Mayor is hereby authorized to execute the purchase of one (1) used 2020 Ford Super Duty F-250 SRW from Dunn Ford Company in the amount of \$36,900.00, attached hereto as Exhibit "A", for the Tontitown Street Department.

Section 2. The Mayor and her designee are hereby authorized to take all such action as necessary in connection therewith.

PASSED AND APPROVED this 5 day of February 2025.

APPROVED:


Angela Russell, Mayor

ATTEST:


Rhonda Ardemagni, City Clerk-Treasurer
(SEAL)

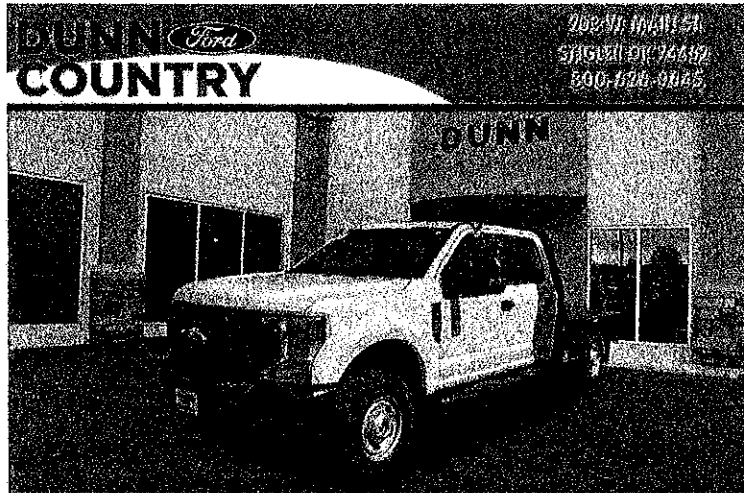
Dunn Ford Company

Phone: (800) 626-9645



Used 2020 Ford Super Duty F-250 SRW
XL 4WD Crew Cab 6.75' Box

DEALER PRICE \$36,900



www.dunnfordcompany.com

Specifications

| | |
|----------------|-------------------------------------|
| Stock Number | 3876P |
| Mileage | 32,355 |
| Vehicle Status | In Stock |
| VIN | 1FD7W2B66LED79423 |
| Exterior | Oxford White |
| Interior | Dark Gray |
| Engine | 6.2L 8 cyl Sequential-Port F.I. |
| Transmission | Automatic |
| Body Style | 4x4 XL 4dr Crew Cab 8 ft. LB Pickup |
| Cylinders | 8 |
| Fuel Type | Flexible Fuel |



FUEL ECONOMY *
N/A CITY / N/A HWY



MILEAGE
32,355 MILES



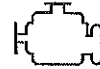
TRANSMISSION
6-SPEED SHIFTABLE
AUTOMATIC



EXTERIOR COLOR
OXFORD WHITE



INTERIOR COLOR
DARK GRAY



ENGINE DATA
6.2L 8 CYL
SEQUENTIAL-PORT F.I.

New, Used, Certified, Demo and Courtesy Vehicle Vehicles *Prices do not include costs of closing, including government fees and taxes, any finance charges, dealer documentation fee of \$189 or any emissions testing fees. All prices, specifications and availability subject to change without notice. Contact dealer for most current information.

New, Used, Certified, Demo and Courtesy Vehicle Vehicles MPG estimates on this website are EPA estimates; your actual mileage may vary. For used vehicles, MPG estimates are EPA estimates for the vehicle when it was new. The EPA periodically modifies its MPG calculation methodology; all MPG estimates are based on the methodology in effect when the vehicles were new (please see the Fuel Economy portion of the EPA's website for details, including a MPG recalculation tool).

The features and options listed are for the new 2020 Ford Super Duty F-250 SRW and may not apply to this specific vehicle.